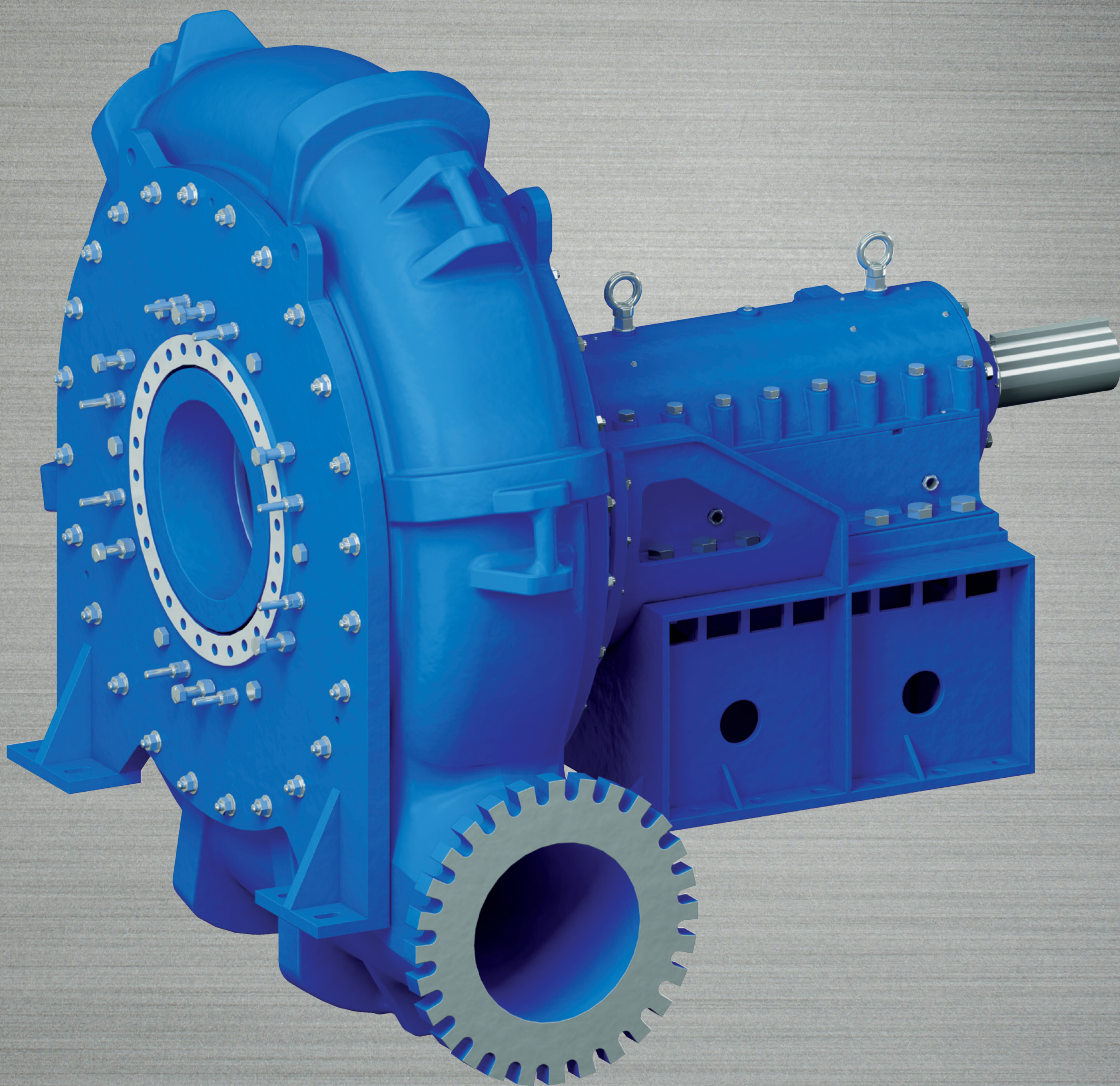


## GIW<sup>®</sup> MDX - Mill Duty Extra Heavy Pumps for Severe Mill Duty Applications





## Choose the GIW® MDX Pump for Mill Duty Applications

### Lower Specific Speed Design

A large diameter impeller results in slower pump rotational speed than competing designs, leading to extended wear life. The lower specific speed design also allows the pump to better meet the variable flow conditions encountered in mill circuits.

### Longer Wearing Materials

GIW Minerals offers a wide range of white iron materials designed specifically to resist the abrasive nature of aggressive slurries. Combined with thicker cross sections, this translates into long and reliable pump service life.

### Deep Base Circle

Minimizes aggressive particle impingement and encourages “sliding” wear. Typical abrasive wear drops dramatically.

### Slurry Diverter

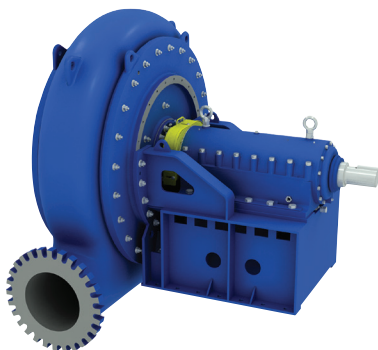
Our latest technology dramatically increases suction liner life by reducing particle recirculation between the impeller and liner.

### Oversize Shrouds

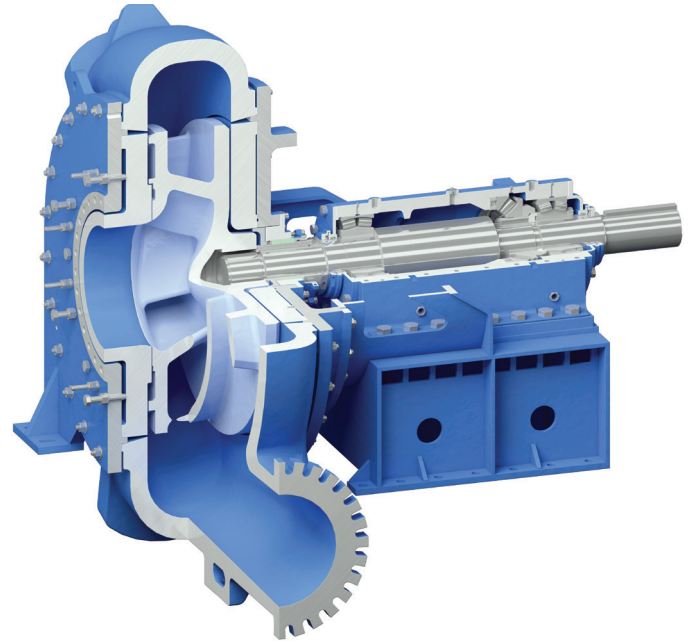
Larger shrouds and extended vanes work in conjunction with the slurry diverter to provide additional clearing action, further reducing recirculation and grinding wear between the impeller and suction liner.

### Adjustable Suction Liner

Allows nose gap adjustment on the fly which in turn reduces downtime and extends the wear life.



Options are available to custom tailor the MDX to meet a wide range of application requirements.



### Patented Inlet 5 Vane Impeller

Designed to efficiently transport aggressive slurries while maximizing pump performance and wear life, and minimize vibration.

## Reduce Downtime by Matching Life Cycles

Select the MDX pump for your next mill circuit application to help ensure cost-effective and continuous operations. The MDX pump maximizes productivity and minimizes cost by matching operating cycle times with scheduled mill outages.

### Technical Data

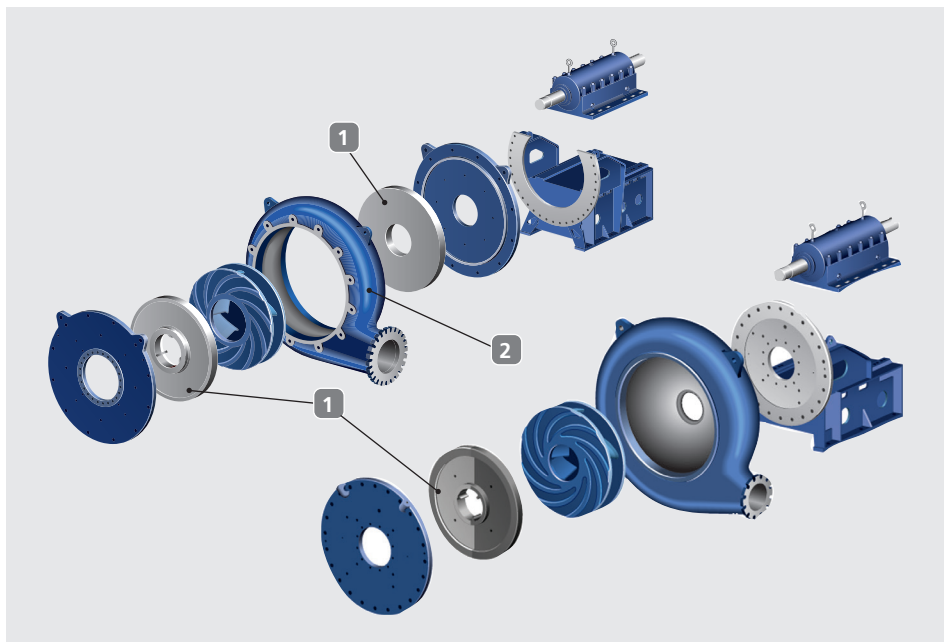
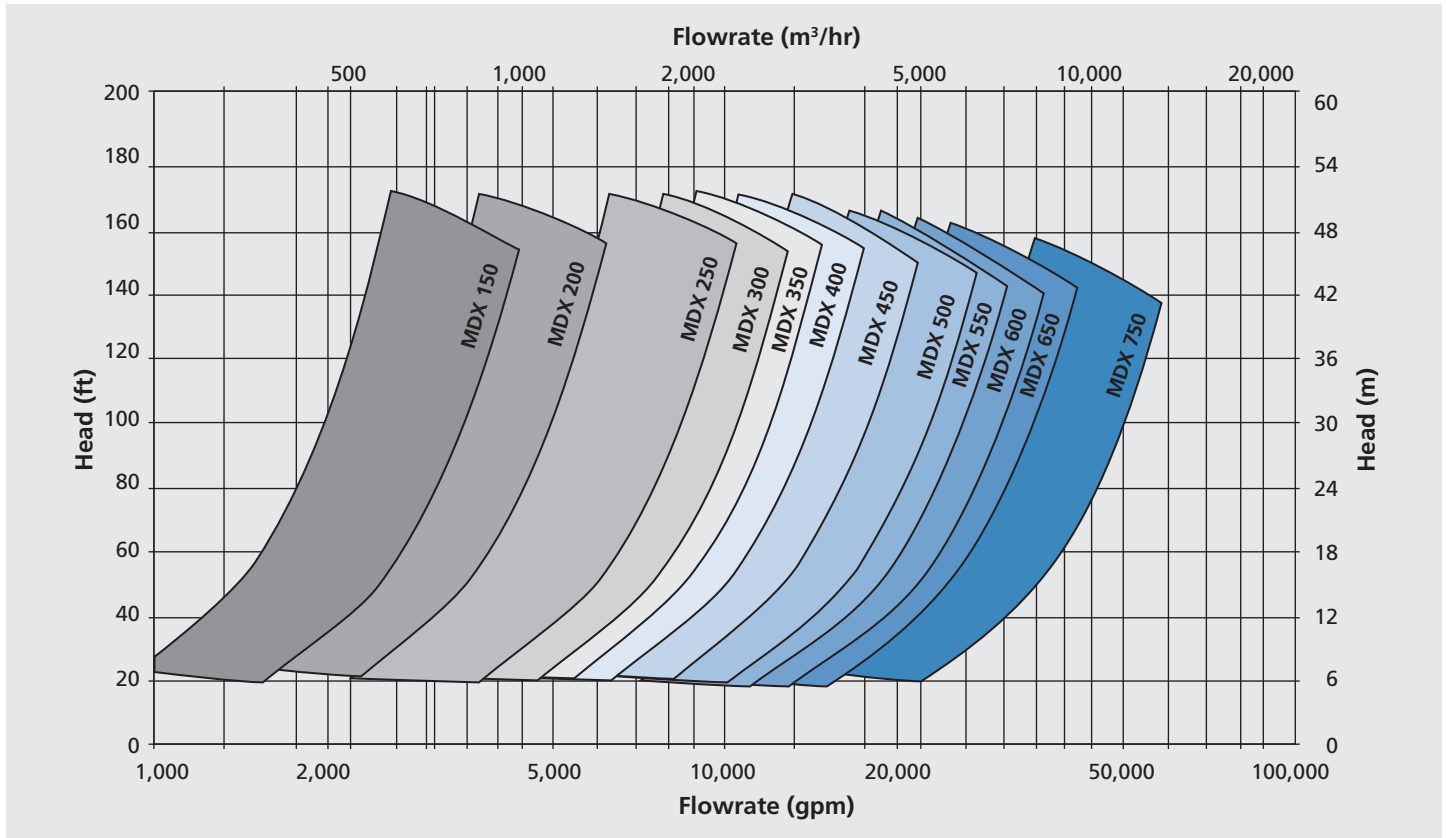
|                 |  |
|-----------------|--|
| Discharge       | 150 to 850 mm  |
| Flow rates      | up to 72,650 gpm<br>(up to 16,500 m <sup>3</sup> /h) |
| Total head      | up to 170 ft (up to 51 m)                            |
| Pressure rating | up to 206 psi (up to 14.2bar)                        |

### Applications

- SAG, Ball and Rod Mill Discharge
- Cyclone and Screen Feed

# Whatever you need, it's here:

## The MDX offers a wide selection range



### Custom Options

- Reduced eye suction liners
  - Adjustable liner assemblies
  - Quick release wet end
  - Full vanes to fit oversized shrouds
- 1** Suction liners and hub liners are available in a wide variety of white irons
  - 2** Open back shell offered on larger sizes for right or left hand pumping applications



**KSB GIW, Inc.**  
5000 Wrightsboro Road, Grovetown  
Georgia 30813-2842, USA  
[www.giwindustries.com](http://www.giwindustries.com)

**GIW® Slurry Pumps**